



MIDWEST HOSE DUCTING MANUFACTURING

KEEPING THE INDUSTRY CONNECTED®

MIDWEST HOSE & SPECIALTY, INC.

Midwest Hose has a reputation for delivering quality, value, and world-class service in our industry. Hard work and high standards have allowed us to become the premier hose manufacturer and distribution company in the Southwest and an industry leader in rotary, vibrator, and choke & kill hoses. With customer demand growing we decided to expand by adding stores closer to major customer operations, which led us to develop markets in the Rockies, the Northeast, the West Coast, and now into the Southeast. Headquartered in Oklahoma City, Oklahoma, Midwest Hose now has three manufacturing plants and 25 branches across the country, and we are still growing.



UNMATCHED RELIABILITY

Founded in 1983, Midwest Hose has established a reputation for excellence in the products we provide and unmatched services industry wide. Our dedicated staff has many years of professional hose experience and ready to serve you for any of your needs. They are certified to the highest API hose assembly guidelines keeping us current with all industry standards. Our products are thoroughly tested to the highest level of quality available to ensure that you receive the utmost precision when your job demands it.



DUCTING MANUFACTURING

Midwest Hose Ducting is one of the hallmarks of our product line. Our unique proprietary materials and sewn construction processes are second to none in the industry allowing us to create a vast number of product options to fulfill your flexible ducting needs. The result is superior ducting solutions that deliver industry-leading performance in quality and workmanship you can rely on. Our ducting plant is located in Oklahoma City, OK and products that are designed to meet the most demanding and exacting job requirements for wire supported ducting including HVAC, ventilation, dehumidification, material handling, clean room environments, fume control, exhaust, as well as many custom OEM applications. We manufacture our ducting with superior flexibility and materials able to handle multiple temperature ranges that are chemical and abrasion resistant. We only use materials utilizing excellent UV compensation with mold and mildew inhibitors for demanding outdoor conditions. They are flame resistant in accordance with UL94VTM-O, California Fire Marshal, and NFPA701 Method 2 specifications. If you need custom options, our knowledgeable staff is ready to assist you to fulfill your needs and keep your business moving forward.

WARRANTY

Our products are guaranteed to be free from defects in material or workmanship for one year. Midwest Hose will replace or repair any of our products proved defective in material or workmanship. We are ready to work with you to ensure you have the best result possible.

PRODUCT SELECTION GUIDE

Midwest Hose offers a variety of hose types to consumers each with unique benefits and uses depending on your specific needs. Below is a guide to assist you in determining the correct hose for your application. Choosing the right flexible hoses starts with choosing the right hose types. Look through the following guide and the product pages that follow to see which type of ducting is best suited for you. And if you are unsure, please give us a call. We are ready to help you find what you need.

Hose	Size	Length
AC Ducting	12" to 24"	25'
Dehumidification Ducting	12" to 24"	25'
Insulated Ducting	12" to 24"	25'
Heater Ducting	12" to 24"	25'
Layflat Ducting	12" to 36"	25', 50', 75', 100'
Layflat Diffuser Ducting	12" to 36"	25', 50', 75', 100'
T7 Ducting	4" to 24"	25'

SIZE Specify the ID of the ducting required.

TEMPERATURE Specify media temperature (°F)

APPLICATION Specify if Air, Fume, Dust, and/or Lightweight Materials will be flowing through the ducting.

MEDIA Specify what media is going through the ducting.

PRESSURE Specify type of pressure. Positive (psi), negative (inches Hg.), and/or inches w.g.

ENDS Specify type of end connection i.e. belt cuff, wire rope, soft cuff, etc.

DELIVERY Quality, packaging, shipping and delivery requirements for specific projects.



COOLING



DEHUMIDIFICATION



DUST



HEATING



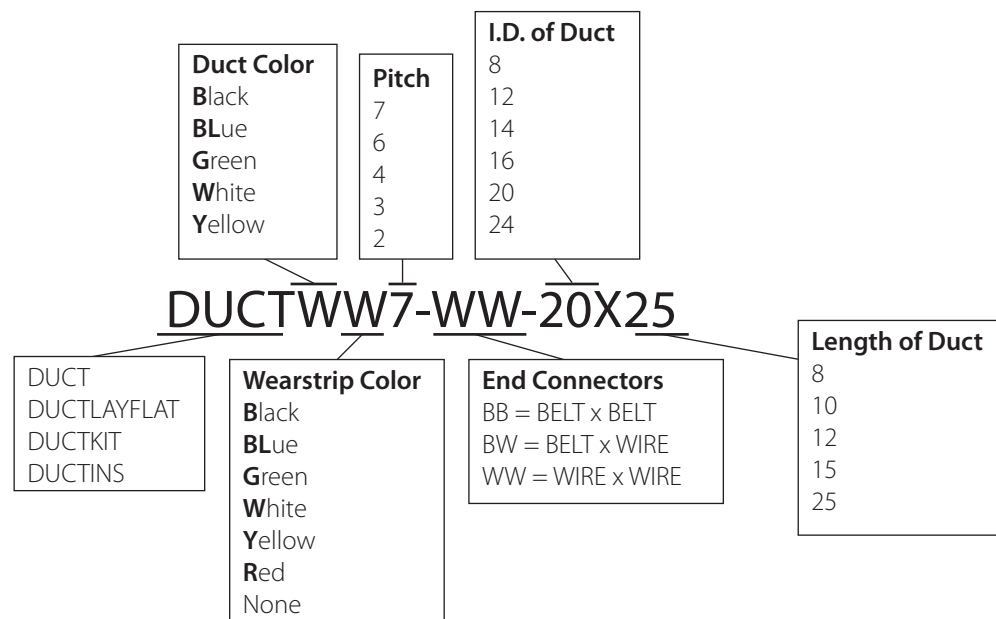
VACUUM



VENTILATION

NOMENCLATURE

Following the easy-to-read diagram below, you can look at our parts list and know which type of hose you are seeing at a glance. It will tell you the duct type, the color, wearstrip color, pitch, end connectors, the duct ID and the length. If you are uncertain, our staff can help you identify the correct part for your job application.



AC DUCTING



SPECIFICATIONS

Temperature	-20° to 180°F
Diameter	12" to 24"
Pitch	3" & 4" Return, 7" Supply
Length	8', 12' & 25' Custom lengths available
Color	● ● ● ○ ●
Wearstrip	Standard & Heavy Duty ● ● ● ○ ●
End Finishes	Wire Rope Coupling, Belt Cuff, Soft Cuff

FEATURES

- Excellent UV stabilization with mold and mildew inhibitors for rigorous outdoor use
- Flame resistant in accordance with UL94VTM-O California Fire Marshal
- Storage Straps included
- Dust resistant material
- Heat sealed & sewn construction
- Made in the USA

DEHUMIDIFICATION DUCTING



SPECIFICATIONS

Temperature	-20° to 180°F
Diameter	12" to 24"
Pitch	3"
Length	25'
Color	● ● ● ●
Wearstrip	Standard Duty ● ○
End Finishes	Wire Rope Coupling on each end

FEATURES

- Excellent UV stabilization with mold and mildew inhibitors for rigorous outdoor use
- Flame resistant in accordance with UL94VTM-O California Fire Marshal
- Storage Straps included
- Dust resistant material
- Heat sealed construction
- Economic solution for an array of ventilation applications
- Made in the USA



COOLING



DEHUMIDIFICATION



DUST



HEATING



VACUUM



VENTILATION

INSULATED DUCTING



SPECIFICATIONS

Temperature -20° to 180°F

Diameter 12" to 24"

Pitch 7"

Length 25'

Color ● ○ ●

Wearstrip Heavy Duty Extruded ● ○

End Finishes Wire Rope Coupling, Belt Cuff, Soft Cuff

FEATURES

- Excellent UV stabilization with mold and mildew inhibitors for rigorous outdoor use
- Flame resistant in accordance with UL94VTM-O California Fire Marshal
- Fiberglass woven insulation effective for a minimum R-Value=6 per application
- Storage Straps included
- Dust resistant material
- Heat sealed and sewn construction
- Proprietary insulation for excellent continual cool air transfer
- Moisture Resistant
- Custom links and colors available on request
- Made in the USA

HEATER DUCTING



SPECIFICATIONS

Temperature -100° to 400°F

Diameter 12" to 24"

Pitch 7"

Length 25'

Color ● ○

Wearstrip Heavy Duty Extruded ● ● ● ●

End Finishes Wire Rope Coupling, Belt Cuff, Soft Cuff

FEATURES

- Excellent UV stabilization with mold and mildew inhibitors for rigorous outdoor use
- Flame resistant in accordance with UL94VTM-O California Fire Marshal
- Storage Straps included
- Sewn construction
- Used in both blowing and exhausting applications
- Made in the USA



COOLING



DEHUMIDIFICATION



DUST



HEATING

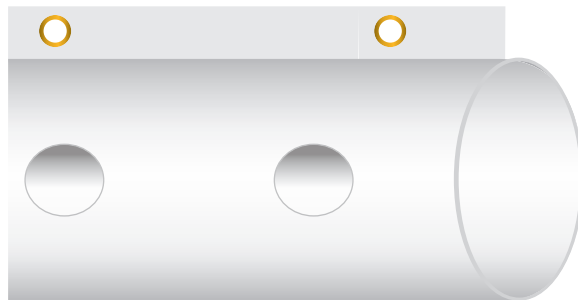
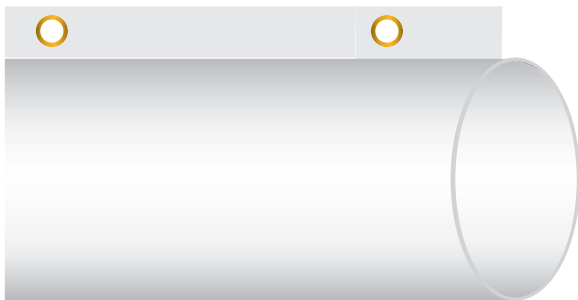


VACUUM








VENTILATION

LAYFLAT DUCTING/LAYFLAT DIFFUSER DUCTING



SPECIFICATIONS

Temperature	-20° to 180°F
Diameter	12" to 36"
Diffuser Hole Diameter	3"
Length	25', 50', 75', 100', custom lengths available upon request
Color	    
End Finishes	Wire Rope Coupling and Bungee End Cap


FEATURES

- Excellent UV stabilization with mold and mildew inhibitors for rigorous outdoor use
- Flame resistant in accordance with UL94VTM-O California Fire Marshal
- Dust resistant & anti-static material
- Tabs w/grommets every 2 foot center
- 3" diffuser holes positioned upon request
- Made in the USA

T7 DUCTING



SPECIFICATIONS

Temperature	-60° to 275°F
Diameter	1.5" to 24"
Pitch	Per size
Length	25', 50' <i>*14" and above in 25' only</i>
Color	
End Finishes	Plain End

FEATURES

- Medium weight thermoplastic rubber hose reinforced with a spring steel wire helix
- Good abrasion resistance
- Designed for applications with wide temperature ranges
- Great moisture and UV resistance
- Excellent chemical resistance
- Smooth interior assures minimal friction loss and efficient air flow
- Wall Thickness = .030"
- Available in metric sizes, consult sales team on pricing and minimums
- Available with factory-installed 2" black soft cuffs
- Made in the USA



COOLING



DEHUMIDIFICATION



DUST



HEATING



VACUUM



VENTILATION

END CONNECTIONS AND ACCESSORIES



BELT CUFF



SOFT CUFF



ZIPPER CUFF



**WIRE ROPE
COUPLING**



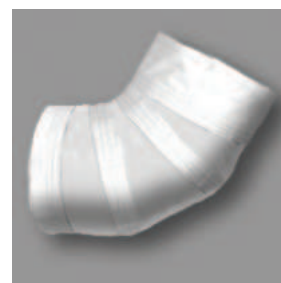
SCREW CLAMP



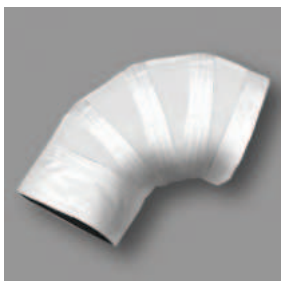
PIN-LOCK



REDUCER



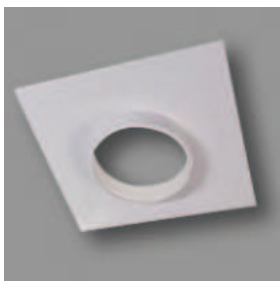
45°



90°



WYE CONNECTOR



**CEILING PANEL
KITS**



BUNGEE END CAP



SLINGS

Custom slings for ducted hoses can be easily made on request. Be sure to ask our staff for details.

WE ARE HERE TO SERVE YOUR NEEDS

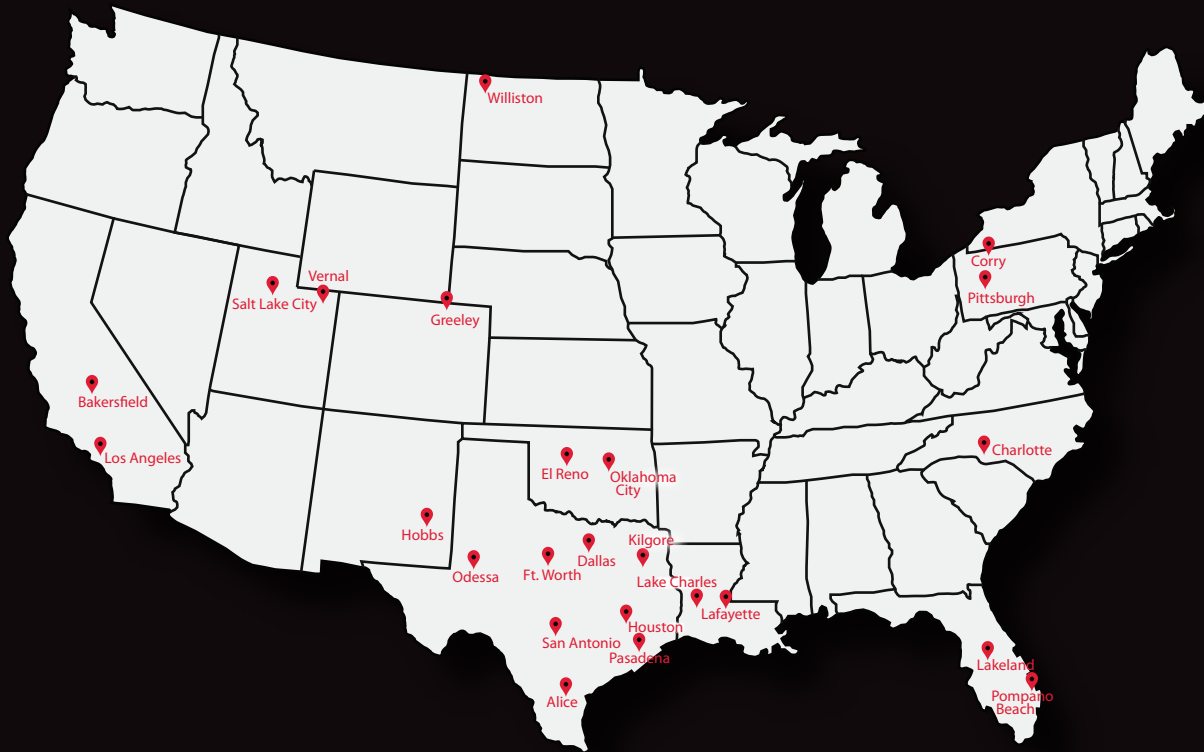
If there is a particular connection or accessory you need please let us know. We can manufacture it to suit your specifications.



SCAN ME

MIDWEST HOSE

KEEPING THE INDUSTRY CONNECTED®



Locations Across the Country Providing Solutions

Manufacturing Facility

HQ Oklahoma City, OK (405) 670-6718

Corry, PA (800) 375-2358

Istanbul, Turkey (800) 375-2358

West

Bakersfield, CA (661) 392-0491

Los Angeles, CA (562) 250-5662

Greeley, CO (970) 330-1357

Hobbs, NM (575) 397-0031

Vernal, UT (435) 781-4760

Salt Lake City, UT (385) 231-1345

Southwest

El Reno, OK (405) 262-2499

Alice, TX (361) 661-1815

Dallas, TX (214) 638-3210

Fort Worth, TX (817) 870-9130

Houston, TX (713) 983-9092

Kilgore, TX (903) 238-9616

Odessa, TX (432) 333-2488

Pasadena, TX (713) 472-2900

San Antonio, TX (210) 932-9304

Midwest

Williston, ND (701) 774-5330

Northeast

Pittsburgh, PA (412) 221-4075

Southeast

Pompano Beach, FL (954) 31 7-5889

Lakeland, FL (863) 777-4360

Lafayette, LA (337) 330-4035

Lake Charles, LA (337) 240-9457

Charlotte, NC (980) 890-9003



midwesthose.com



mobile.midwesthose.com



layflat.midwesthose.com

Toll Free: 1-800-375-2358
sales@midwesthose.com
Keeping the Industry Connected®



05/2022