



**MIDWEST HOSE
LAYFLAT**

KEEPING THE INDUSTRY CONNECTED®



- Cast Aluminum A356-T6
- Machined with knurled texture to thoroughly engage hose between stem and clamp
- Anodized for abrasion/corrosion



LAYST

Grooved Stem
Field Attachable

- Cast Aluminum A356-T6
- Machined with knurled texture to thoroughly engage hose between stem and clamp
- Anodized for abrasion/corrosion
- Safety lock avoids accidental uncoupling
- Gasket in stem for leak-tight seal



LAYST2SET

Storz Stem
Field Attachable

- Grooved or Storz Stem
- Cast Aluminum A356-T6
- Anodized for abrasion/corrosion
- SS bolts for longevity
- Lightweight, rounded



LAYGHC

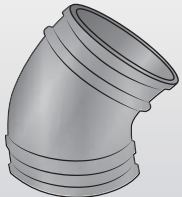
Clamp
Field Attachable

- Assembled onto pipe without disassembling the bolts, nuts, and housing
- Speedier installation than normal grooved clamps
- Push onto grooved fitting end, join by a second grooved fitting end, then tighten bolts and nuts



LAYGCR

Speedier Installation



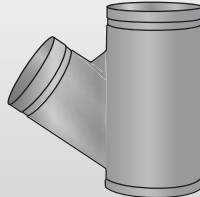
LAYG45

Grooved 45°



LAYGTEE

Grooved Tee



LAYGY

Grooved Y, Parallel Y
Lateral Y



LAYGME

Mender



LAYFMT

Flow Meters



LAYPIG

Piggings Products

Stops flow to repair hose
w/o losing water



LAYHRT

Layflat Hose
Restrictor



BAUERS STYLE

Quick Connects

For opening/closing
Storz Fitting



LAYSTZHND

Storz Bars 7/8" ID



CAMLOCKS





Quick Connects

TPU Layflat Hose

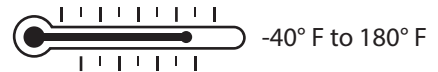
Designed for produced water/ fresh water transfer. Typically used for hydraulic fracture water transfer, to replace damaged hydrant lines, or to replace a broken water main. Manufactured with NSF standard 61 approved materials for use with potable water. Custom hose color and branding available on big volume orders.



Part Number MWHPOLYTW200-XXX

|  ID | Wall Thickness |  Max WP |  Elongation |  Weight | Reel Length |
|--|----------------|---|--|--|-------------|
| inch | inch | psi | at WP | lbs./660 ft. | feet |
| 4 | 0.157 | 250 | 1.0% | 667 | 660 |
| 6 | 0.161 | | 1.0% | 1063 | |
| 8 | 0.165 | 200 | 0.7% | 1419 | |
| 10 | 0.165 | | 0.5% | 1894 | |
| 12 | 0.196 | 150 | 0.5% | 2462 | |

TEST DOCUMENTATION



Construction Polyurethane Extruded Through the Weave and a Circular Polyester Woven Reinforcement. No use of glues or adhesives.

Safety Factor Minimum 2.25 to 1

Lining Properties

Ultimate Tensile Strength no less than 1200 psi

Ultimate Elongation when tested to UL-19 guidelines a small dumbbell sample of lining elongates a minimum of 400%

Resistance

Abrasion 25mm³ on DIN 53516/ISO4649 testing, up to 5 times more resistant and 50% more puncture resistant than Nitrile/PVC

Cold Remains flexible in as low as -40° F conditions

Ozone No cracking in lining or cover when tested to ASTM D518 Procedure B (100 pphm/118°F/70 hours)

Chemical Resistant to most chemicals and petroleum products




All assemblies are proof tested at working pressure in the USA. We take a great deal of pride in promising that only the highest quality product leaves through our doors.

Warflex Through the Weave

A more economical alternative to our polyurethane layflat hose. Warflex is reinforced with high-tenacity polyester yarn and coated through the weave with a 70% nitrile rubber / 30% PVC blend for good chemical resistance for produced water. Less abrasion resistance and puncture resistance. Custom hose color and branding available on big volume orders.



Part Number MWHWARFLEX•••-XXX

|  ID | Wall Thickness |  Max WP |  Weight | Reel Length |
|--|------------------------|--|--|-------------------------------|
| inch | inch | psi | lbs./660 ft. | feet |
| 2 | 0.079 | 200 | 0.27 | 660, 100, and 50 foot lengths |
| 3 | 0.085 | 175 | 0.45 | |
| 4 | 0.093 | 150 | 0.64 | |
| 6 | 0.112 | 150 | 1.11 | |
| 8 | 0.126 | 150 | 1.88 | |
| 10 | Available upon request | | | |
| 12 | | | | |

TEST DOCUMENTATION



Construction Nitrile/PVC Blend Extruded Through the Weave and a Circular Polyester Woven Reinforcement. No use of glues or adhesives.

Safety Factor Minimum 2.25 to 1

Lining Properties

Ultimate Tensile Strength no less than 1200 psi

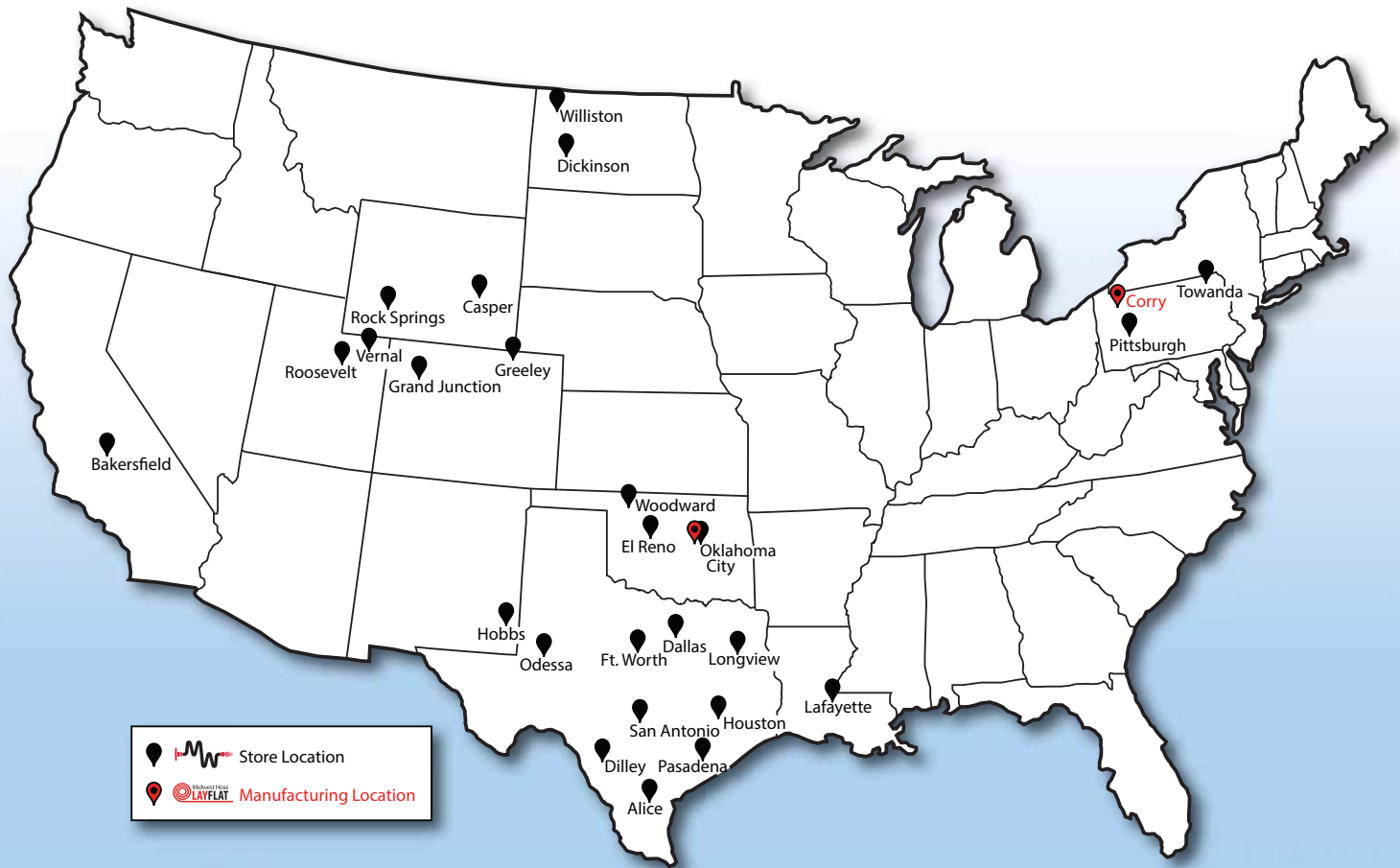
Ultimate Elongation when tested to UL-19 guidelines a small dumbbell sample of lining elongates a minimum of 400%

Resistance

Ozone No cracking in lining or cover when tested to ASTM D518 Procedure B (100 pphm/118°F/70 hours)

Chemical Resistant to most chemicals and petroleum products

Midwest Hose & Specialty, Inc.



Corry, PA Manufacturing Plant



Oklahoma City, OK Manufacturing Plant & Store

