

MIDWEST HOSE

LAYFLAT FITTINGS

NEW & IMPROVED!



DURABLE //

Z Pex coated stem for corrosion prevention especially when using produced water

// 25% STRONGER

Stem thickness is more robust for damage protection in the field

ENHANCED //

Enhanced coupling retention with the lock-in clamp to stem design and longer shank

// SLEEK

Sleek shape for aesthetically pleasing looks

FLUSH //

Hardware is recessed into the pockets of the clamp that prevents it from hanging up

// RELIABLE

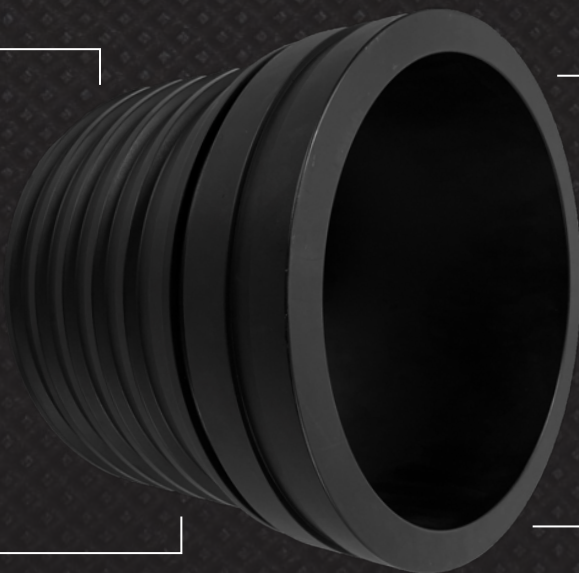
Fool proof and easy to assemble fitting with lock-in clamp to stem design

SECURE //

Lock washer prevent vibration loosening of the hardware

// SMOOTH

Low profile clamp with beveled end allows for smooth transition along terrain



STEMS

Size	Weight	Length	Wall Thickness
inch	lbs	inch	inch
3	0.88	3.50	0.50
4	1.69	4.50	0.50
6	3.96	6.00	0.565
8	6.10	6.10	0.813
10	11.8	7.37	0.875
12	16.4	8.50	0.925
14	24.5	9.25	1.25
16	28.0	9.25	1.25

CLAMPS

Size	Weight	Height	Wall Thickness
inch	lbs	inch	inch
3	3.15	4.81	.791
4	4.50	4.81	.791
6	5.40	4.81	.791
8	6.30	4.81	1.06
10	13.0	4.81	1.06
12	18.4	5.87	1.06
14	26.8	5.87	1.96
16	31.6	5.87	1.96

TORQUE

Size	Torque
inch	Foot lbs
3	90
4	90
6	90
8	90
10	90
12	90
14	90
16	90

ACCESSORIES



**ALUMINUM
FITTING**



**STAINLESS STEEL
FITTING**



CLAMP



CLAMP



**VITON
GASKET**



**GROOVED
45°**



**GROOVED
90°**



**GROOVED
TEE**



**FLANGE X
GROOVE
ADAPTER**



FLOW METER



WHIP CHECKS



HOSE FLOAT



HOSE REEL



HOSE DEPLOYER



**CUSTOM
LOGO**



**CUSTOM
COLOR**